

CONSOLE LIGHT

PLT 122 LX

*An exceptional gooseneck lamp...
Two Luxeon™ LEDs in conjunction
with a special diffuser provide a warm,
low-shadow light.*

*The highly robust head is made
entirely from black anodised aluminium.*

*The integrated constant current
source allows for a wide range
of operating voltages from 9-18V DC.*

*The light can be dimmed using
the optional PWM-controller.*



Highly robust head

*2 LUXEON™ LEDs
with diffuser*



ARNOLD
LICHTTECHNIK

CONSOLE LIGHT

PLT 122 LX



With standard XLR plug
551-001 to 004



With right-angle plug
551-021 and 022



Without plug for permanent
mounting 551-061 to 064



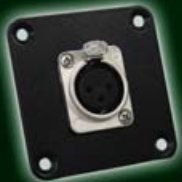
Permanent mounting kit
548-122



Brass screws
548-131 and 548-132



Brass screws and mounting
kit fitted



Adapter plate 2 for XLR plug
548-112



Adapter plate 3 for permanent
mounting 548-113



Adapter plate 5 with switch
548-115



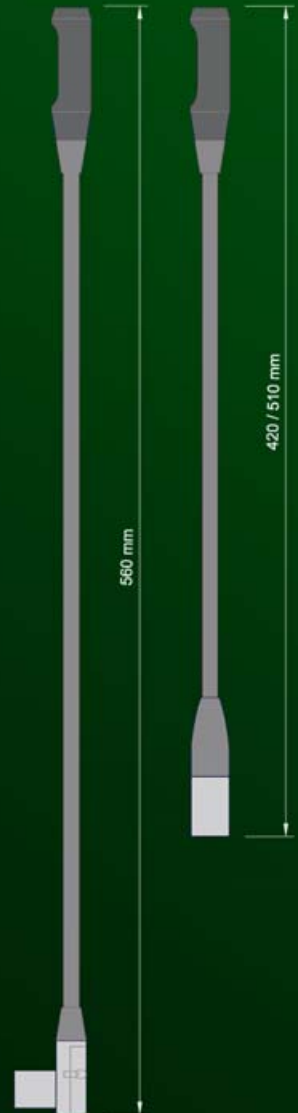
Dimmer LC-PWM 324
(OEM-Version) 547-002



12 V plug-in power supply
for XLR Plug 543-102



Power adapter (350 mA constant
current source) for permanent
mounting 543-107



Technical Data

| | |
|-------------------------|---|
| Lamp head | Aluminium, black anodised, other colours available on request |
| Light Source | 2 x Luxeon TM LED 1W white 5500°K/3200°K, other colours available on request |
| Operating Voltage | 9-18 V DC |
| Current Consumption | 350 mA |
| Connector | 3-pin XLR plug |
| Angle of reflected beam | approx. 80° |

We reserve the right to alter the technical specification and design.

Standard layout XLR plug



other layouts available
on request



other colours available on request



ARNOLD
LICHTTECHNIK

Karl-Marx-Strasse 204 04655 Kohren-Sahlis Germany
Phone: +49 34344 61226 / Fax: 61528 www.arnoldlicht.de Mail: info@arnoldlicht.de