

PRODUCTION DESK LIGHT

RPL 526 LX

Five very bright
1W LUXEON™ LEDs,
a precision housing in black
anodised aluminium,
high-tech on-board electronics
with a voltage converter unit,
and a dimmer in the head are
the hallmarks of the outstanding quality
of this production desk light.

The impressive brightness and
functionality of this light makes
it suitable for a wide range of
uses including production desks,
lecterns and other operational situations.
The wide operating voltage range
of 10 – 24 V DC makes it easy to use in practice.



The head features 340 degree rotation.



 **ARNOLD**
LICHTTECHNIK

PRODUCTION DESK LIGHT

RPL 526 LX



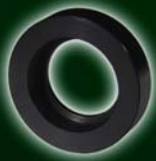
With standard XLR plug
549-001 to 004



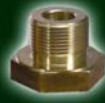
Without plug for permanent
mounting 549-061 to 064



Brass screws and mounting
kit fitted



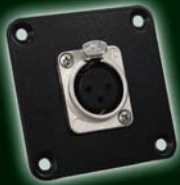
Permanent mounting kit
548-122



Brass screws
548-131



Brass screws
548-132



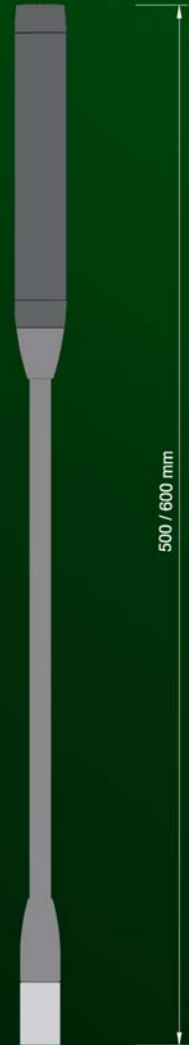
Adapter plate 2 for XLR Plug
548-112



Adapter plate 3 for permanent
mounting 548-113



12 V plug in power supply
543-102



Technical Data

Lamp head	Aluminium, black anodised, other colours available on request
Light Source	5 Luxeon™ LED 1W white 5500°K/3200°K, other colours available on request
Operating Voltage	10-24 V DC
Current Consumption	0,4A on 24V / 0,9A on 10V
Connector	3-pin XLR plug
Angle of reflected beam	approx. 80°

Standard layout XLR plug



other layouts available
on request

We reserve the right to alter the technical specification and design.



ARNOLD
LICHTTECHNIK

Karl-Marx-Strasse 204 04655 Kohren-Sahlis Germany
Phone: +49 34344 61226 / Fax: 61528 www.arnoldlicht.de Mail: info@arnoldlicht.de