

PRODUCTION DESK LAMP

RPL 642 LX

As a special function, this light offers two colours:

4 white Luxeon™ LEDs and 2 blue Luxeon™ LEDs.

The production desk lamp is specially designed for use in the theatre.

A typical use would be to light the production desk.

It is also suitable for use in the prompt box or to light various secondary desks in the stage area.

A precision housing in black anodised aluminium, high tech-on board electronics with a voltage converter, and a dimmer in the head are the hallmarks of the outstanding quality of this production desk light.

A variety of LED combinations and mounting options complete the range. The wide operating voltage range of 10 – 24 V DC makes it flexible and practical to use.



ARNOLD
LICHTTECHNIK

PRODUCTION DESK LIGHT

RPL 642 LX



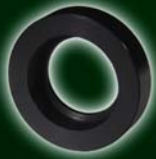
With standard XLR plug
550-001 to 004



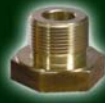
Without plug for permanent
mounting 550-061 to 064



Brass screws and mounting
kit fitted



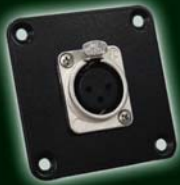
Permanent mounting kit
548-122



Brass screws
548-131



Brass screws
548-132



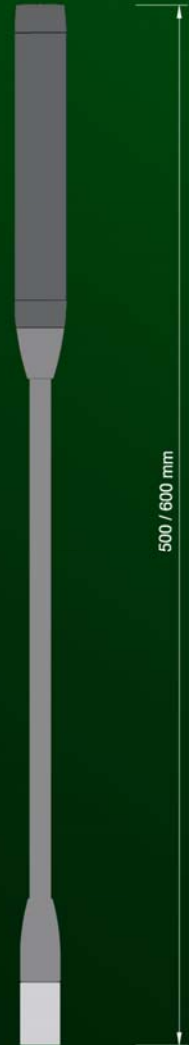
Adapter plate 2 for XLR Plug
548-112



Adapter plate 3 for permanent
mounting 548-113



12 V plug in power supply
543-102



Technical Data

Lamp head	Aluminium, black anodised, other colours available on request
Light Source	4 Luxeon™ LED 1W white 5500°K/3200°K, 2 Luxeon™ LED 1W blue 455 nm
Operating Voltage	10-24 V DC
Current Consumption	0,3A on 24V / 0,8A on 10V
Connector	3-pin XLR plug
Angle of reflected beam	approx. 80°

Standard layout XLR plug



other layouts available
on request

We reserve the right to alter the technical specification and design.



ARNOLD
LICHTTECHNIK

Karl-Marx-Strasse 204 04655 Kohren-Sahlis Germany
Phone: +49 34344 61226 / Fax: 61528 www.arnoldlicht.de Mail: info@arnoldlicht.de